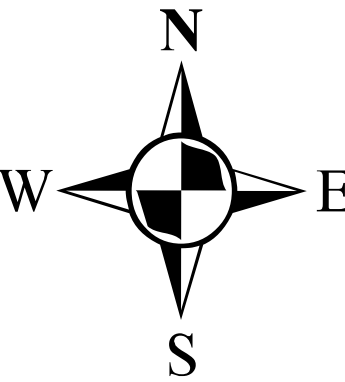


2023 STORMWATER INSPECTION MAP

BERNARDSVILLE BOROUGH
SOMERSET COUNTY
NEW JERSEY



Legend

Inlet Condition

- ★ Good
- Poor Structure
- Bad Debris
- ▲ Poor Both

Outfall Condition

- ★ Good
- ★ Fair
- ★ Poor

Other Features

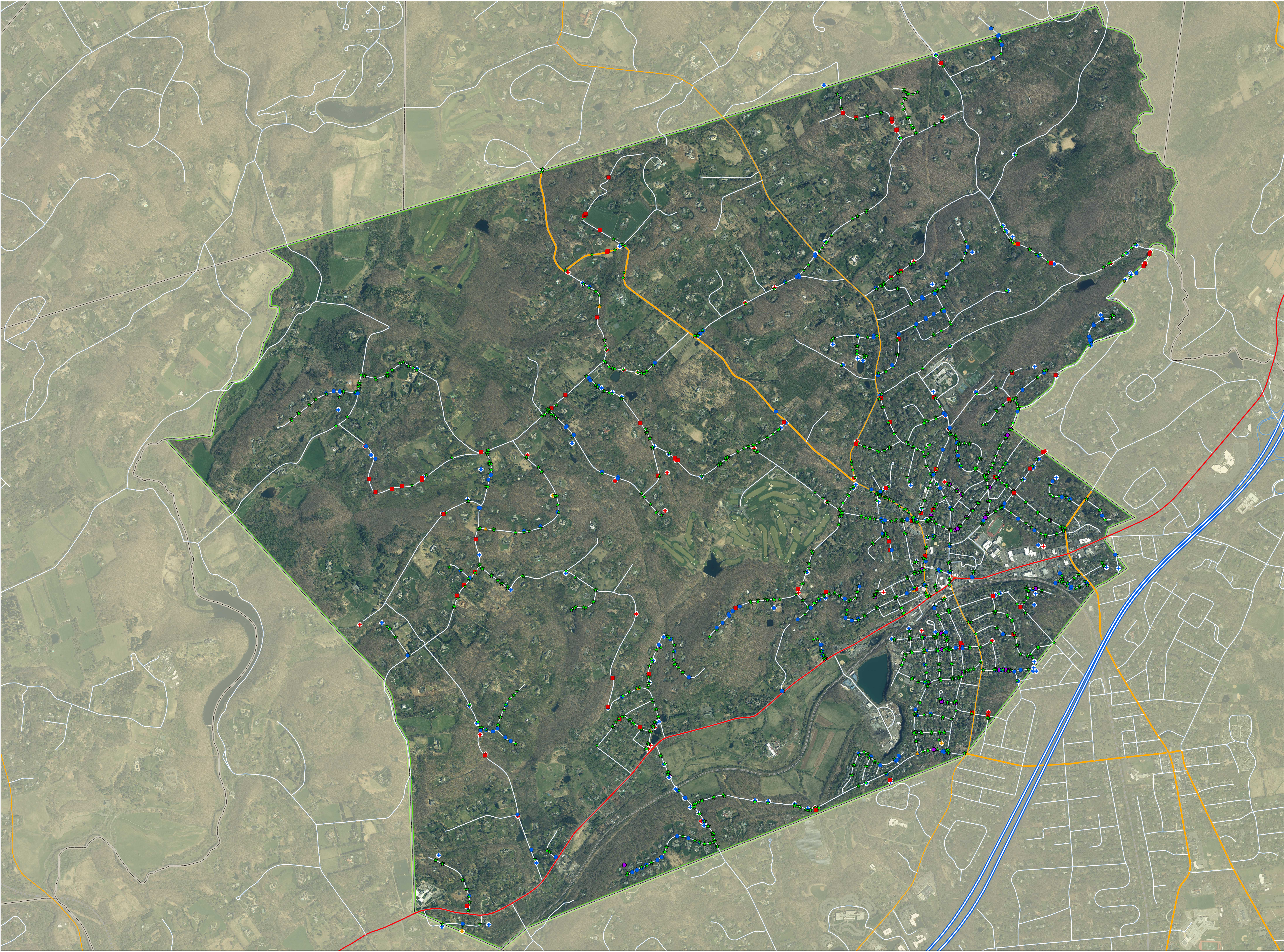
- Manholes

Roads

- Primary Limited Access or Interstate
- Primary US and State Highways
- Secondary State and County Highway
- Freeway ramp
- Local or Rural Road
- Railroads

Boundaries

- Bernardsville Borough
- Municipal Boundary



Coordinate System: NAD 1983 StatePlane New Jersey FIPS 2900 Feet
Projection: Transverse Mercator
Datum: North American 1983
Units: Foot US
Date: July 2023

1 inch = 1,100 feet

0 1,100 2,200 4,400 6,600 8,800 Feet

PREPARED BY:

